

ZT2000 Zero-Turn Mower



The Bobcat ZT2000 delivers reliability and affordability in a zero-turn mower. Equipped with a robust Kawasaki FR series engine, it effortlessly tackles diverse terrains, reaching cutting speeds of up to 7 mph. Its robust steel frame and commercial-grade transmission guarantee enduring performance, while its high-back spring-suspension seat provides comfort during those long mowing sessions.

[Request a Quote](#)

[Schedule a Demo](#)

[Find a Dealer](#)

ZT2000 Specifications

| Key Specifications | |
|---------------------------|------------------------|
| ZT2000 - 52" | ZT2000 - 48" |
| Engine Power | |
| 16 kW | 16 kW |
| Cutting Deck Width | |
| 1320 mm | 1219 mm |
| Ground Speed | |
| 11 km/h | 11 km/h |
| Drive Wheel Size | |
| 20 x 10-10 | 20 x 10-10 |
| Engine | |
| ZT2000 - 48" | ZT2000 - 52" |
| Model | |
| Kaw FR651V | Kaw FR651V |
| Engine power | |
| 16.00 kW | 16.00 kW |
| Displacement | |
| 726.00 cm ³ | 726.00 cm ³ |
| Fuel Capacity | |
| 14.00 L | 14.00 L |
| Air Filter | |
| Single Stage | Single Stage |
| Electrical | |
| ZT2000 - 48" | ZT2000 - 52" |
| Charging System | |
| 15.00 A | 15.00 A |
| Clutch | |

142.00 N 142.00 N

Deck

| ZT2000 - 48" | ZT2000 - 52" |
|--------------------------------------|----------------------------|
| Mower Deck | |
| TufDeck Cutting System | TufDeck Cutting System |
| Width | |
| 1219.00 mm | 1320.00 mm |
| Adjustable Anti-Scalp Rollers | |
| 3.0 | 3.0 |
| Cutting Height | |
| 38.0-114.0 mm | 38.0-124.0 mm |
| Blade Tip Speed | |
| 74.7 fpm @ 3500 Engine rpm | 82.8 mps @ 3500 Engine rpm |
| Discharge Chute | |
| Flexible Molded Polymer | Flexible Molded Polymer |

Frame

Width

1219.00 mm

1320.00 mm

Adjustable Anti-Scalp Rollers

3.0

3.0

Cutting Height

38.0-114.0 mm

38.0-124.0 mm

Blade Tip Speed

74.7 fpm @ 3500 Engine rpm

82.8 mps @ 3500 Engine rpm

Discharge Chute

Flexible Molded Polymer

Flexible Molded Polymer

Transmission

| ZT2000 - 48" | ZT2000 - 52" |
|---|---|
| Front and Rear | |
| 1.5- x 2.5-inch Steel Tubing; Welded Steel Reinforced Frame | 1.5- x 2.5-inch Steel Tubing; Welded Steel Reinforced Frame |
| Machine Length | |
| 1930.00 mm | 1930.00 mm |
| Machine Weight | |
| 350.00 kg | 357.00 kg |

Front and Rear

1.5- x 2.5-inch Steel Tubing; Welded Steel Reinforced Frame

1.5- x 2.5-inch Steel Tubing; Welded Steel Reinforced Frame

Machine Length

1930.00 mm

1930.00 mm

Machine Weight

350.00 kg

357.00 kg

Wheels

| ZT2000 - 48" | ZT2000 - 52" |
|-----------------------------------|-----------------------------------|
| Type | |
| HG ZT-2800 Hydrostatic Transaxles | HG ZT-2800 Hydrostatic Transaxles |
| Pump Displacement | |
| 10.00 cm ³ | 10.00 cm ³ |
| Oil Capacity | |
| 3.80 L | 4.00 L |
| Forward Speed | |
| 11.00 km/h | 11.00 km/h |
| Reverse Speed | |
| 4.80 km/h | 4.80 km/h |

Type

HG ZT-2800 Hydrostatic Transaxles

HG ZT-2800 Hydrostatic Transaxles

Pump Displacement

10.00 cm³10.00 cm³

Oil Capacity

3.80 L

4.00 L

Forward Speed

11.00 km/h

11.00 km/h

Reverse Speed

4.80 km/h

4.80 km/h

Seat

| ZT2000 - 48" | ZT2000 - 52" |
|--------------------------------|-----------------|
| Drive Wheel Size | |
| 20 x 10-10 | 20 x 10-10 |
| Front Caster Wheel Size | |
| 11 x 6-5 | 11 x 6-5 |
| Caster Arm Attachment | |
| Welded to Frame | Welded to Frame |

Drive Wheel Size

20 x 10-10

20 x 10-10

Front Caster Wheel Size

11 x 6-5

11 x 6-5

Caster Arm Attachment

Welded to Frame

Welded to Frame

Dimensions

| ZT2000 - 48" | ZT2000 - 52" |
|-----------------------------------|-----------------------------------|
| Description | |
| High Back, Spring Suspension Seat | High Back, Spring Suspension Seat |
| Fore-Aft Adjustment | |
| Seat Slide Lever | Seat Slide Lever |

Description

High Back, Spring Suspension Seat

High Back, Spring Suspension Seat

Fore-Aft Adjustment

Seat Slide Lever

Seat Slide Lever

Dimensions

| ZT2000 - 48" | ZT2000 - 52" |
|-----------------------|--------------|
| Height | |
| 814.00 mm | 814.00 mm |
| Overall Length | |
| 1930.00 mm | 1930.00 mm |

Height

814.00 mm

814.00 mm

Overall Length

1930.00 mm

1930.00 mm

| | |
|-----------------------------------|-------------|
| Overall Width (Chute Up) | |
| 1241.00 mm | 1381.00 mm |
| Overall Width (Chute Down) | |
| 1591.00 mm | 1731.00 mm |
| Cutting Height | |
| 38 - 124 mm | 38 - 124 mm |
| Wheelbase | |
| 1220.00 mm | 1220.00 mm |
| Cutting Width | |
| 1220.00 mm | 1321.00 mm |
| Blade Length | |
| 413.00 mm | 457.00 mm |

ZT2000 Features

[Expand all](#)

Performance ⁴

- High-performance engine
- Achieving the perfect cut
- Large fuel capacity
- Commercial-grade transmission

Comfort ¹

- Comfort

Built for your needs ¹

- Built for your needs

Serviceability ¹

- Serviceability

Durability ¹

- Durability

Similar Machines



WB700 Zero-Turn Walk-Behind Mower

Walk-behind, mower with high stability in uneven terrain, powerful hydraulic drive, and a proven engine.

[Learn More >](#)


ZT3000 Zero-Turn Mower

Ride-on, zero-turn mower with a powerful engine, large fuel capacity, and a robust steel-tubed frame.

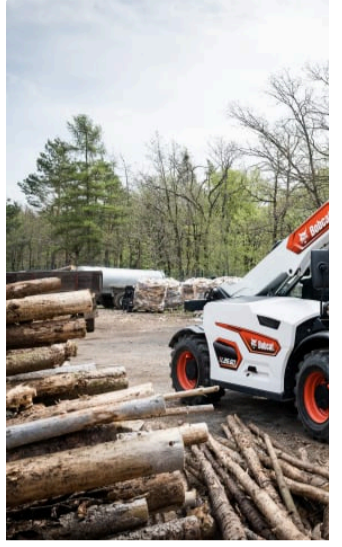
[Learn More >](#)


ZT3500 Zero-Turn Mower

Ride-on, zero-turn mower with a powerful engine, large fuel capacity, a commercial-grade transmission and a high-performance deck.

[Learn More >](#)


Related Content



Bobcat Launches New Line of Mowers for Professional Use

27 June 2023

Bobcat has launched the first four models in the company's new range of Mowers for the European market, as part of the Ground Maintenance Equipment (GME) portfolio introduced at the end of 2022.

Bobcat Rolls Out Ground Maintenance Equipment in EMEA

26 October 2022

Following on from its success in the North American market, Bobcat's line-up of innovative ground maintenance equipment (GME) is now available to customers across the Europe, Middle East and Africa (EMEA) region.

Bobcat Machines and Te

24 October 2022

At Bauma 2022, Bobcat is presenting its latest equipment on the company's stand and output with a host of ground



[View All >](#)